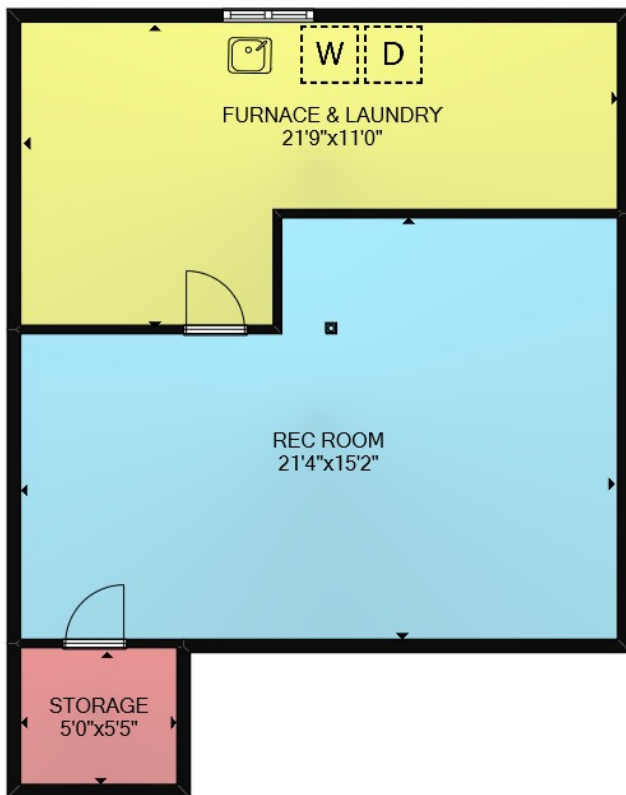


FLOORPLANS

544 Victoria Street

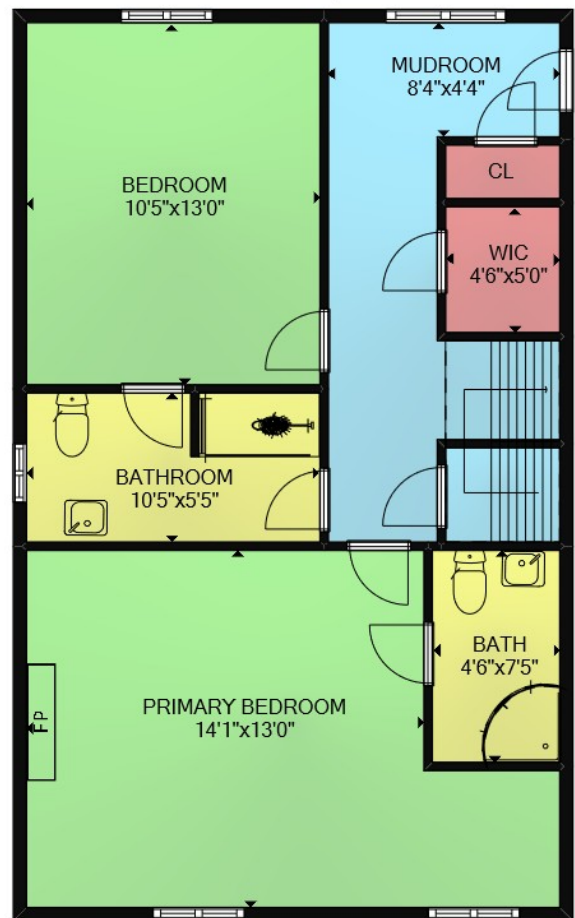
NIAGARA-ON-THE-LAKE

FLOOR 1 TOTAL AREA SQUARE FOOTAGE - 534 ft²



Sizes and dimensions are approximate. Actual may vary. This plan is for illustration purposes only and should be used as such by any perspective purchaser.

FLOOR 2 TOTAL AREA SQUARE FOOTAGE - 676 ft²



Sizes and dimensions are approximate. Actual may vary. This plan is for illustration purposes only and should be used as such by any perspective purchaser.



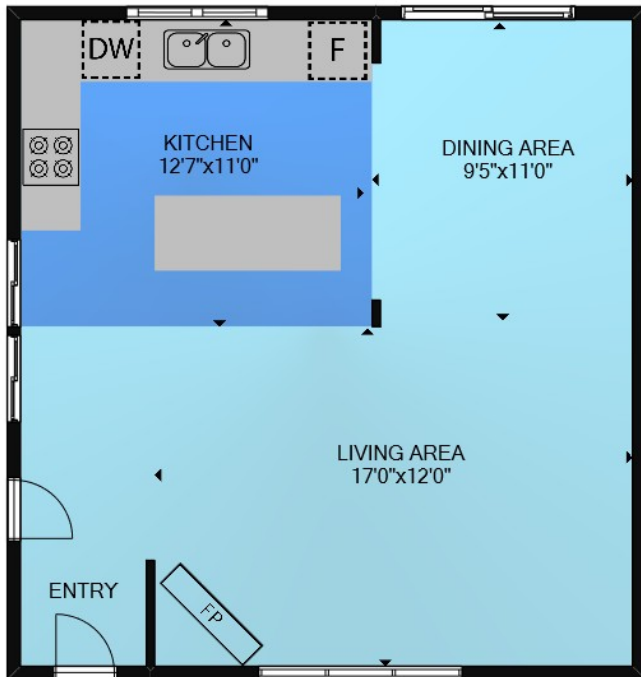
PALMER HOMES
Niagara

FLOORPLANS

544 Victoria Street

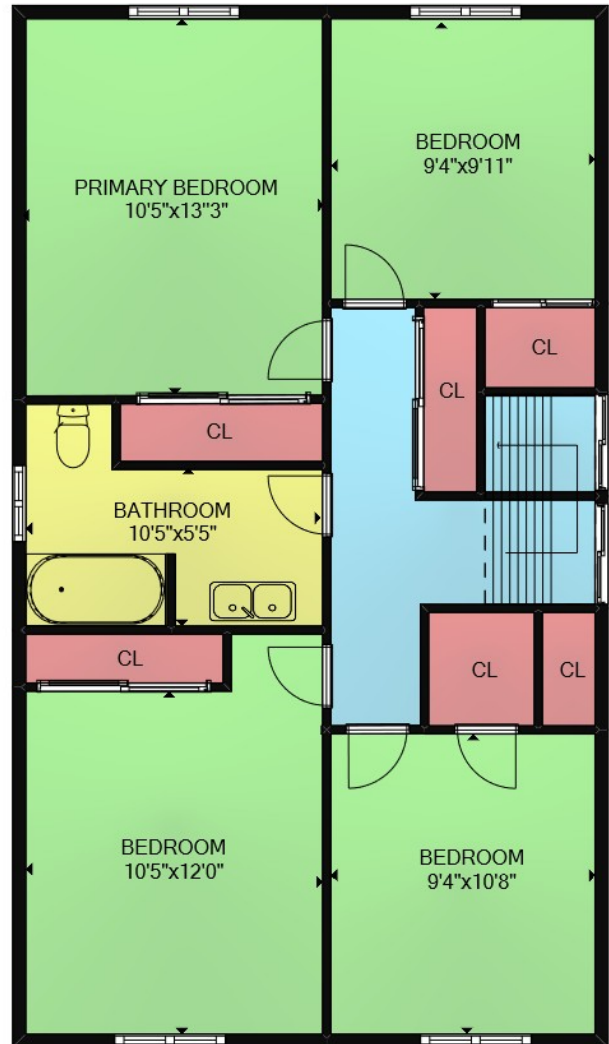
NIAGARA-ON-THE-LAKE

FLOOR 3 TOTAL AREA SQUARE FOOTAGE - 550 ft²



Sizes and dimensions are approximate. Actual may vary. This plan is for illustration purposes only and should be used as such by any perspective purchaser.

FLOOR 4 TOTAL AREA SQUARE FOOTAGE - 787 ft²



Sizes and dimensions are approximate. Actual may vary. This plan is for illustration purposes only and should be used as such by any perspective purchaser.

Leading COMPANIES OF THE WORLD

BOSLEY
REAL ESTATE EST 1928



LISA PALMER

BROKER

289.219.1614 direct

905.468.8600 business

905.468.8700 fax

lpalmer@bosleyrealestate.com

CHRISTINE MCINTYRE

REALTOR®

647.282.9870 direct

905.468.8600 business

905.468.8700 fax

cmcintyre@bosleyrealestate.com



PALMER HOMES
Niagara

BOSLEY REAL ESTATE LTD., BROKERAGE | 5-233 KING STREET, P.O. BOX 1556 - NIAGARA-ON-THE-LAKE, ON L0S 1J0 | BOSLEYREALESTATE.COM

All information and statements contained herein, provided by Bosley Real Estate Ltd., Brokerage regarding property for sale, rental or financing is from sources deemed reliable and assumed correct, but no warranty or representation is made as to the accuracy thereof and same as submitted subject to errors, omissions, change of price, rental or other conditions, prior sale or withdrawal without notice.